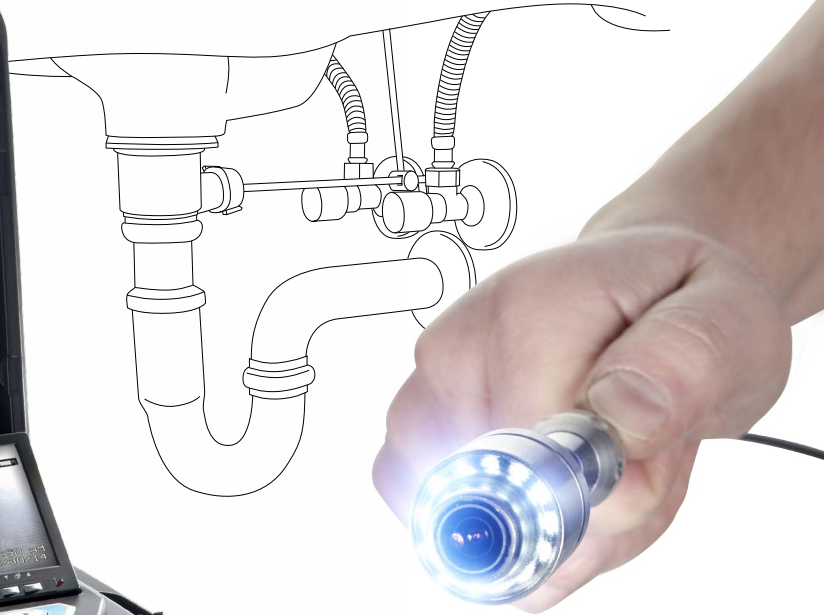


WÖHLER



CLEAR VIEW, WHEN SPACE IS TIGHT.

Wöhler VIS 250

VIDEO INSPECTION, POSITION INDICATOR AND LOCATOR

1" diameter

MINIATURE
COLOR
CAMERAHEAD

CAMERAHEAD
COLORED
MINIATURE

The Measure of Technology



Made in
Germany

WOHLER VIS 250

Intelligent camera head guides and tracks

Wohler's innovative VIS 250 service camera enables you to easily analyze damage in pipes of 1 1/2" dia and larger – and no power outlet required. Compact by design and powered by a rechargeable battery, this complete camera set is supplied in a plastic case. The camera head features a powerful, integrated light to allow you to precisely analyze damage in waste water pipes (at least 1 1/2" dia) and inspect downpipes as well as flue gas lines. Absolutely essential to analyze damage quickly!

In addition to competently analyzing hidden defects in all types of buildings, the Wohler VIS 250 provides you with transparent on-the-spot damage diagnostics.

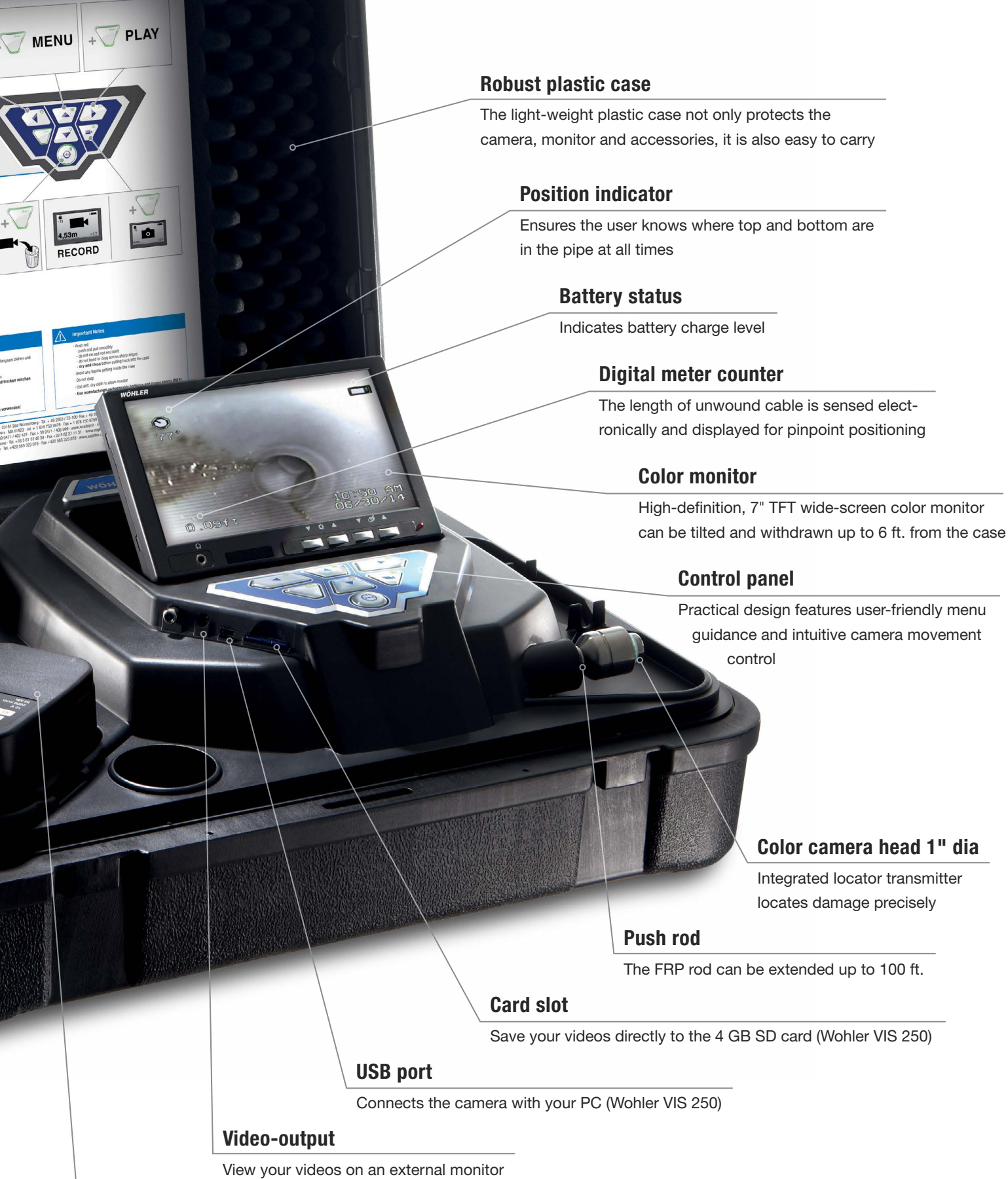
Thanks to its user-friendly handling and instant start-up characteristics, you not only ensure your customers are satisfied but you can also feel relaxed about meeting the challenges ahead. The integrated video memory allows you to fully document your inspection work.

The camera saves a video of the voyage of the camera head through the pipe. It passes even several 90° bends without problem. With a simple touch of a button a photo of a damaged spot can be made and stored.

We have brought the localization of the damage to perfection so that it is easy to estimate the cost for the repair. The distance to the camera head is indicated in the display as well as the position. This helps very much in run of ducts. The display always shows where the top and the bottom of the duct are. The user also sees the exact angular momentum in which the camera head is pushed upwards or downwards. With the new Wohler L 200 Locator it is even possible and economic to locate the camera head via radio.

- **Ideal for analyzing household waste water pipes of 1 1/2" dia and larger**
- **Flexible – the camera easily takes even several bends in stride**
- **Position of waterproof camera head indicated in the display**
- **Integrated locator transmitter precisely locates damage**
- **Up to 4 hours flexibility – storage space for 2 NiMH rechargeable batteries**
- **100 ft. FRP push rod**
- **Compact and safely stored for transport and mobility in a plastic case**





Robust plastic case

The light-weight plastic case not only protects the camera, monitor and accessories, it is also easy to carry

Position indicator

Ensures the user knows where top and bottom are in the pipe at all times

Battery status

Indicates battery charge level

Digital meter counter

The length of unwound cable is sensed electronically and displayed for pinpoint positioning

Color monitor

High-definition, 7" TFT wide-screen color monitor can be tilted and withdrawn up to 6 ft. from the case

Control panel

Practical design features user-friendly menu guidance and intuitive camera movement control

Color camera head 1" dia

Integrated locator transmitter locates damage precisely

Push rod

The FRP rod can be extended up to 100 ft.

Card slot

Save your videos directly to the 4 GB SD card (Wohler VIS 250)

USB port

Connects the camera with your PC (Wohler VIS 250)

Video-output

View your videos on an external monitor

2 powerful rechargeable batteries

Space to store 2 rechargeable NiMH batteries (12 V) - each with a rechargeable, operating battery life of up to 2 hours – the main battery is charged in the case

WIDE RANGE OF APPLICATIONS

Analyze damage and inspect:

- Waste water pipes of 1 1/2" dia and larger
- Ventilation lines of 1 1/2" dia and larger
- Inspect hollow spaces, e.g. in front-wall installations
- Flue gas lines up to approx. 6" dia

FUNCTIONALITY

- Waterproof, light-sensitive camera head with a diameter of just 1" easily takes bends in stride
- Store video footage on a 2 GB SD card (Wohler VIS 250)
- Digital Indication of the camera head
- Electronic metering displayed on monitor
- Fully equipped mobile solution in a robust, plastic case
- Does not require main power supply
- Bright TFT color monitor for razor-sharp images
- Tilttable and removable monitor
- Integrated video output for documentation purposes
- Battery operating time: 2 x 120 min. with 2 rechargeable batteries (optional)
- Data exchange via mini USB cable (Wohler VIS 250)

LOCATOR (OPTIONAL)

- Transmitter integrated in camera head makes it possible to precisely locate the camera head
- Facilitates targeted repairs to damaged pipelines
- Telescopic holder makes it possible to locate damage under floors or in ceilings
- Chalk holder with lithographic chalk ensures it is possible to mark located damage immediately
- Powerful rechargeable battery

DOCUMENTATION

Simply record and store photos and videos on a 2 GB SD card (Wohler VIS 250) for documentation and archiving purposes for you and your customers

TECHNICAL DATA

Monitor

Dimensions housing	7" x 4.5" x 1.3"
TFT-display	7" / 16:9 format
Video out	FBAS signal
Weight	1 lbs
Power supply	Space for 2 rechargeable batteries, each 12 V or via power pack
Battery operating time	Max. 2 rechargeable batteries, each 120 mins. = 4 h (battery status in display)

Miniature color camera head, 1" diameter

Type	1/3" COLOR CMOS
Resolution	420 lines
Pixels	768 x 576 (PAL), 656 x 492 (NTSC)
Light sensitivity	0.5 Lux
Lens	f = 0.09", F = 2.5
Viewing angle	115°
Light source	12 white LEDs
Degree of protection	Waterproof to IP 68
Dimensions	Ø 1" x 1.5"
Weight	0.5 lbs
Operation temperature	32...104 °F, RH 95 % MAX
Storage temperature	-4...122 °F, RH 95 % MAX
Transmitter frequency	8.9 kHz

Push rod

Length	100 ft.
Diameter	0.24"
Distance measurement	electronic meter counter

Plastic case

Dimensions	20" x 17" x 7" (l x w x h)
Weight	15 lbs

Locator receiver

Display	Graphic visualization of transmitted position
---------	---

Output impedance

Headphones	32 Ohm
Power supply	12 V NiMH battery (rechargeable)
Operating temperature	32...104 °F
Storage temperature	14...104 °F
Weight	1.3 lbs
Dimensions	13" x 6" x 3" (l x w x h)

Memory (Wohler VIS 250)

Recording	4 GB SD card (2.5 h recording capacity)
Interface	Mini USB port

WÖHLER

Wohler USA Inc.

5 Hutchinson Drive · Danvers, MA 01923

PHONE: (+1) 978 750 9876 · FAX: (+1) 978 750 9799

MAIL: info@wohlerusa.com · WEB: www.wohlerusa.com



EndoMatrix (M) Sdn Bhd

No. 51-5, Block G, Dataran Prima, Jalan PJU 1/37,
47301 Petaling Jaya, Selangor Darul Ehsan, Malaysia.

Phone: 03-7803 1145 | Fax: 03-9101 4814

sales@endomatrix.com.my | www.endomatrix.com.my