



• Shenzhen Seva Lighting Co.,Ltd

# SW2162

## Explosion proof azimuth lamp

[www.szseva.com](http://www.szseva.com)

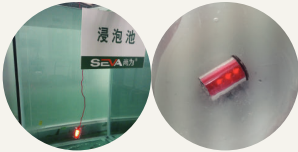
In all kinds of inflammable and explosive places and special places, it can be used as warning sign, direction indication and signal contact for workers in construction emergency rescue.



### TECHNICAL PARAMETERS

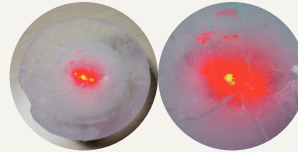
Ex-mark: Ex ia IIC T6 Ga  
Light source: LED  
Rated voltage: <3V  
Stroke: ≥200h  
Burst flash: ≥120h  
Long bright: ≥50h

Protection grade:  
IP68 (100meters)  
Dimensions 73x46x38mm  
Weight :100g



#### Ultra-strong waterproof

Traspt fully sealed design, can work normally in 100 meters under water.



#### High and low temperature resistance

Non-lithium battery, it can work normally at -60°C or 120°C;

#### Performance characteristics:

- The highest explosion-proof grade of intrinsically safe type, it can work safely in various inflammable and explosive places (including zone 0).
- Imported LED light source, 4800 meters (3 miles) visible to the naked eye. The penetration of water and fog is 300-500m.
- Fully tight process design, can work normally within 100 meters of water.
- Equipped with two AAA high-energy batteries, the continuous working time is more than 200 hours. There are three functions of stroboscopic flash, burst flash and long light. The shell is made of American bulletproof rubber material to ensure that the product can withstand strong collisions and impacts.
- It is small in size, light in weight and easy to operate. It can be carried by hanging, clip, binding and magnetic adsorption.
- The material undergoes a special surface protection treatment and can work normally in a strong corrosive environment.
- It can work normally under -60°C severe cold or 120°C high temperature.

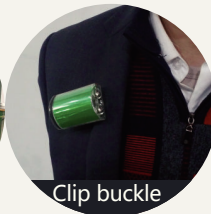
#### Multiple installation methods:



Magnetic



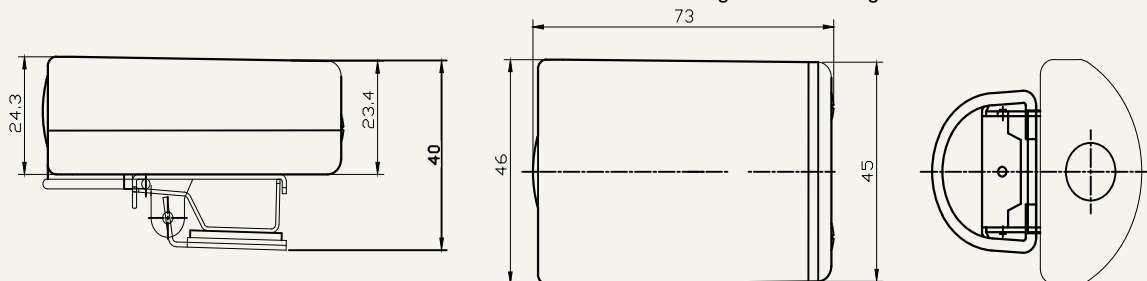
Rope hanging



Clip buckle

- Magnetic absorption: can be adsorbed on the surface of any steel as a warning.
- Rope hanging: it can be hung on the staff, equipment and other objects that can not be magnetized or are not convenient for magnetic absorption.
- Clip buckle: the clip on the back can be clamped on clothes and wrapped lamp objects;
- Binding: it can be hung on the staff or tied to the equipment

#### Outline dimension drawing



Contact: Alice Zhong    [alice.hzxn@szseva.com](mailto:alice.hzxn@szseva.com)