

WÖHLER

NEW



UNIQUELY CLEAN VIEW.

Wöhler VIS 700 HD-Video Inspection System

Digital video inspection with individual focus control

The Measure of Technology



Made in
Germany

Overview of functions



HD-Video Inspection

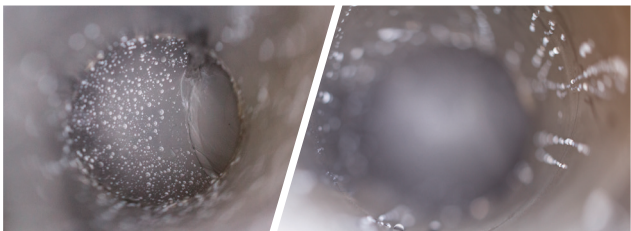
Digital pictures and a high resolution monitor provide an absolutely clear image.

Flexible Operation

The monitor can be fixed to the case in two different positions. The screen can be operated by touch or by joystick. The monitor is tiltable and removable.

Individual Control of Sharpness

The motor driven focus can be adjusted by touchscreen or joystick.



far range close range

Comments & Voice Notes

A comments function allows you to add descriptions to captured photos. It is also possible to add voice notes to video footage.

Position and angle display

Ensures the user knows where top and bottom are in the pipe at all times. The length of unwound cable is sensed electronically and displayed for pinpoint positioning.

Easy to clean and a lot of space for accessories

The case is easy to clean thanks to the easily removable top shell. Moreover, the twinwall hard case also protects the camera head and the monitor.



Hand-held

Adjustable to individual requirements, reliable grip when operating the monitor.



Anti-glare protection

The anti-glare protection is stored in the case. If necessary- it can be fixed to the monitor.

Transmission of live images by Wireless LAN

To transmit the video signal to an external monitor or your smartphone/tablet.

Powerful Li-ion battery

With a respective operating battery life of 4 hours – high speed charging via the latest USB standard (USB-C connection).

USB stick & SD card slot

Save your pictures and videos directly to the SD card or an USB stick.

1.5 inch pan & tilt camera head

Tilts 180° from left to right and pans through 360°. Precisely adjustable depth of focus. IP 67.

Durable Camera Rod

The 100 foot camera rod is flexible and durable because of its construction.

✂ Application

Analyze damage and inspect:

- House connection pipes up to 8"
- NDT applications
- Flue gas systems of 2.5" and larger
- Ventilation system ductwork
- False ceilings, hollow spaces, shafts
- Industrial machines / plant
- Waste water lines of 2.5" and larger



Functionality

- HD touchscreen – razor sharp recordings from any perspective
- Adjustable depth of focus
- Optics pan 360° and tilt 180° - even the smallest amount of damage is viewable
- Camera head with integrated variable frequency transmitter
- Electronically determined position and angle of the camera head shown on the display
- Brightly illuminating color camera head, 1.5" in diameter and 2.5" in length, easily negotiates tight bends
- Electronic distance counter displays position on monitor
- Bright TFT color monitor for razor-sharp images
- Battery operating time of 4 hours with a rechargeable Li-ion battery
- Fully equipped mobile solution in a rugged twinwall hard case
- Comments features touch screen keyboard for typed notes
- Voice notes
- Fast and effective cleaning of the camera rod

TECHNICAL DATA

Monitor

Dimensions housing	10 x 6 x 2 in
TFT display	7" / 16:9 format
	1280 x 800 px
Weight	2 lbs.
Power supply	USB C 5 V / 3 A
Power supply	3.7 V, 11.4 Ah rechargeable Li-Ion battery
Battery operating time	4 h (battery status in display)
Operating temperature	32...104 °F
Storage temperature	-4...122 °F

Wöhler pan & tilt camera head 1.5 inch

Type	1/2.7" Color CMOS
IP rating	IP 67
Viewing angle, diagonal	160°
Focus distance	1 inch...∞
Light source	10 white LEDs
Dimensions	1.5 x 2.5 inches
Transmit frequency of Locator	variable

Camera rod

Length	100 ft.
Diameter	.33" x .22"

Electronic meter counter

Resolution	1 inch
Max. deviation	5% of reading

Memory

Max. capacity of SD card	32 GB
Technology	SD or SDHC, speed class 10
Recording capacity	Approx. 3 GB/h
Resolution recording	1280 x 720 HD, max. 25 fps
Recording format	AVI (H264)

Double-walled plastic case

Dimensions	7 x 18 x 20 inches
Total weight incl. monitor, camera head and push rod	22 lbs.

Locator receiver

Display	Graphic camera position indicator
Output impedance, headphones	Typ. 32 Ohm
Frequency	~9 kHz
Power supply	3.7 V rechargeable Li-Ion battery
Operating temperature	0...104 degrees F
Storage temperature	14 °F...104 °F
Weight	1.5 lbs.
Dimensions	12 x 6 x 3 inches

Wöhler VIS 700 HD-Video Inspection System

Inspection of waste water pipes, flue gas and ventilation lines



Basic set (ready to use)

Wöhler VIS 700 HD-Video Inspection System

Wöhler VIS 700 Monitor with HD TFT monitor 7" incl. 5 ft. cable and Li ION battery

Wöhler pan and tilt color camera head 1.5 inch, detachable

SD memory card 32 GB

Camera rod 0.33 x 0.22 inch, 100 ft. long (removable for cleaning)

5 replacement plastic domes

1 anti slide mat

USB-charger with USB-C-cable

Plastic case

Article no. 7082

WÖHLER

Wohler USA Inc.

5 Hutchinson Drive · Danvers, MA 01923

Phone: (+1) 978 750 9876 · Fax: (+1) 978 750 9799

Mail: info@wohlerusa.com · Web: www.wohlerusa.com

M&T
INNOVATIONS

M&T Innovations (M) Sdn Bhd

No. 32-2A, Jalan PJU 1/3A, Sunwaymas Commercial Centre, 47301 Petaling Jaya, Selangor, Malaysia.

PHONE: (603) 7803 2245 · FAX: (603) 7803 1147

MAIL: sales@mt-engg.com · WEB: www.mt-engg.com